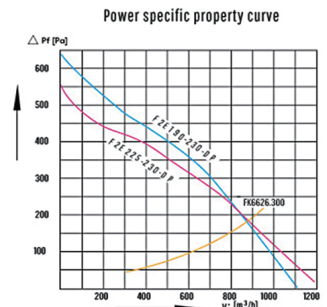
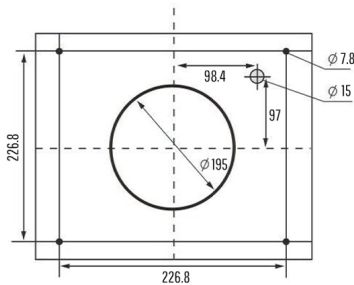
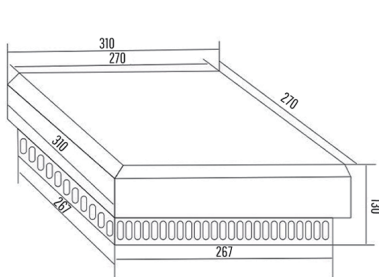


INSTALLATION CONDITIONS:

- Small size and light weight
- Not occupying excess space
- High-performance, industrial ball-bearing fans
- Remarkably heat dissipation in a short time

Engineering Drawing (mm)



Specifications

Model No. (Cabinet Roof Fan)	G2E190-230-DP	G2E220-230-DP	G2E225-230-DP
Rated operating voltage	230V	230V	230V
Frequency	50/60 Hz	50/60 Hz	50/60 Hz
Air flow rate (Free blow)	570/620 m ³ /h	860/900 m ³ /h	1200/1340 m ³ /h
Air flow rate with filter	1 x GF6626.300:456/496 m ³ /h	1 x GF6626.300:540/688 m ³ /h	1 x GF6626.300:960/1072 m ³ /h
Max. rated current	0.34/0.26A	0.40/0.38A	0.88/0.60A
Rated Power	75/58W	90/85W	200/135W
Noise level	62/64 dB(A)	73/74 dB(A)	69/71 dB(A)
Operating temperature range		-10°C ~ 60°C	