

GN92A

92x92x25mm (3.6"x3.6"x1")

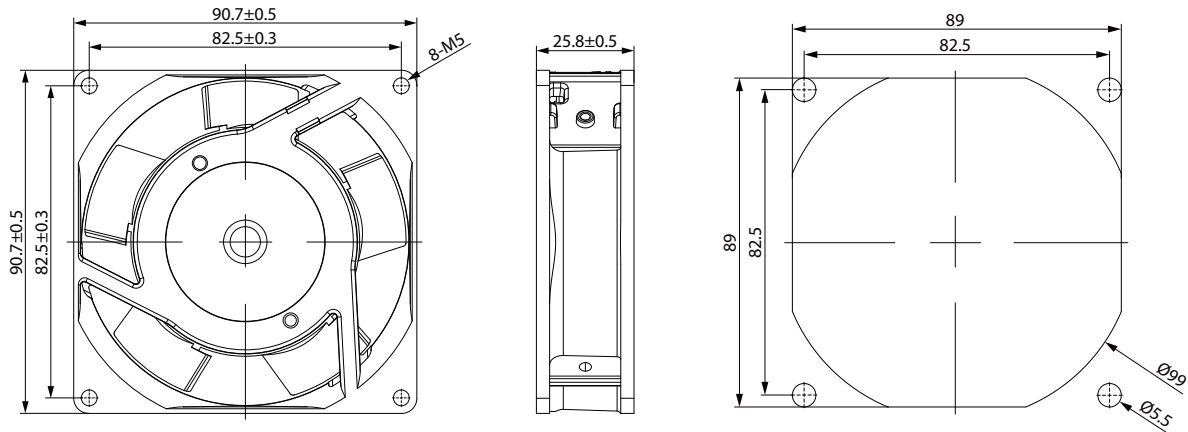


Fan Frame:	Die-cast Aluminum(Black or Silver coating)
Fan Impeller:	Plastic
Operation Temp.:	-30~60°C
Operation Voltage Range:	110V(±10%); 220V(±10%)
Dielectric Strength:	5mA Max.at 1500V for 1 min
Safety:	Impedance Protected
Termination:	Lead Wire; Pin
Weight:	270g
Protection Class:	IP44
Insulation:	Class A

Specifications

Model	Bearing	Blades	Voltage	Freq.	Current	Power	Speed	Noise	Max. Air Flow	Pressure	
No.			VAC	Hz	A	W	RPM	dB(A)	m³/h	CFM	mmH ₂ O
GN92A1	Ball	5	100/125	50/60	0.12/0.11	12/11	2350/2700	34/36	44.2/52.7	26/31	4.14/3.01
GN92A2	Ball	5	200/240	50/60	0.07/0.06	12/11	2350/2700	34/36	44.2/52.7	26/31	4.14/3.01
GN92A3	Ball	5	360/400	50/60	0.05/0.04	12/11	2350/2700	34/36	44.2/52.7	26/31	4.14/3.01

Engineering Drawing (mm)



Air Performance

